



**DOUBLE E**  
G R O U P

# TRIM WINDER

This is the ideal slitter rewinding machine for edge trim removal. The Double E Group Trim Winder runs independently of the slitter as a trim winding machine. It can be added on to any system without any integration of controls.

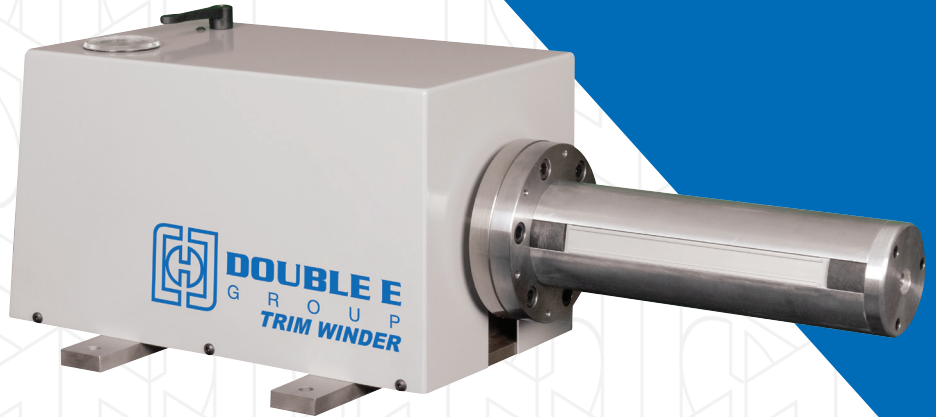
## TRIM WINDER

The Double E Group Portable Pneumatic Winder is a safe, efficient method of winding any web including edge trim. Its rugged construction and efficient winding can be used on all converting equipment. The winder's simple design allows its winding speed to follow the line speed of the material. Its pneumatic drive system, without gears or clutches, allows for infinite stop-go or stalled motion.

## OSCILLATORS

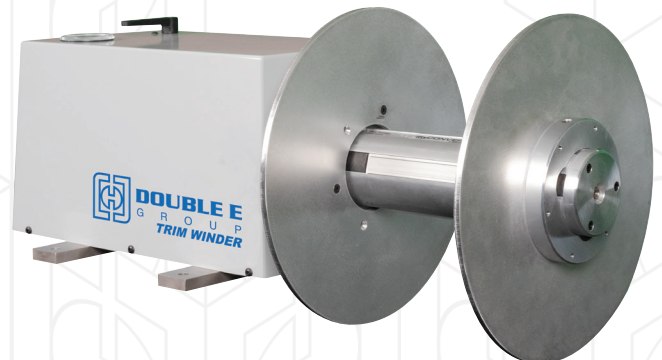


Double E Group Oscillators are often used in conjunction with the Pneumatic Winder to ensure optimum even distribution over the core. Each Oscillator is custom made with the specified range of motion or "throw".



## FEATURES

- Easy to use
- No electricity
- Heavy duty construction
- Maintenance free
- Pneumatic drive
- Variable speed and torque capacity
- Core or coreless winding
- Mount on or off machine in any orientation
- Clean room compatible
- Positive drive and tension control



SCAN ME!



[ee-co.com](http://ee-co.com)



**DOUBLE E**  
G R O U P

# TRIM WINDER

## APPLICATION SPECIFICATIONS

Trim material type: \_\_\_\_\_ Trim material thickness: \_\_\_\_\_

Core material: \_\_\_\_\_ Core I.D.: \_\_\_\_\_

Maximum trim web width: \_\_\_\_\_ Minimum trim web width: \_\_\_\_\_

Maximum trim roll weight: \_\_\_\_\_ Minimum trim roll weight: \_\_\_\_\_

Line speed: \_\_\_\_\_

Trim Winder maximum roll diameter: \_\_\_\_\_

Is a back shield required?: \_\_\_\_\_ Is a front shield required?: \_\_\_\_\_

Is an Oscillator required for this application?: \_\_\_\_\_

Will an air valve be required on the end? \_\_\_\_\_

Is the winder separating materials? \_\_\_\_\_

Does the winder need to wind in both directions or just one? (Single direction is most common): \_\_\_\_\_

Other specifications or comments: